

 **LOAD IN INSTRUCTIONS**

Teams,

The Load In Doc is **PROVISIONAL** and subject to change. Instructions are sent out on average 10 days prior to loading in, to allow teams a window to contact me for any requests.

REMINDER – this year ALL Pickup Trucks pulling trailers (bumper or 5th wheel) **WILL BE DISCONNECTING AND MOVING VEHICLES TO P1 IMMEDIATELY WHEN PARKED.** PLEASE BE PREPARED TO DISCONNECT QUICKLY UPON BEING PARKED.

Rows 3 & 4 will be stacked parking, not nose to tail. Given the number of entries there will be teams parked on the hill on the 3 pads. Load in will start with Row 1, 9 a.m. Thursday April 16th.

LOAD IN ORDER

Row 1	ON SKID PAD	DOWN EXIT RAMP 3
1	Rodio	
2	Wrench	
3	Saddlemen	
4	Indian	
5	Vance & Hines	
6	Strack	
7	RAHAL DUCATI (Entry Ramp)	
8	STRACK	
9	SHIEBE	
10	BPR	
11	Orange Cat	
12	HSBK	
13	HSBK	
14		
15		

Row 3	STAGING ON SKID PAD	DOWN EXIT RAMP 3
1	Team Roberts	
2	Jones Honda	
3	MP13	
4	Thrashed	
5	Top Pro/Edge	
6	Liberty Yamaha	
7		
8		

Row 2	STAGING ON SKID PAD	DOWN ENTRY RAMP 1
1	Attack Yamaha	
2	M4	
3	M4 Hospitality	
4	Real Steel Honda	
5	Real Steel Honda 2	
6	Royal Enfield	
7	HD	
8	Big Diehl HD	
9	SDI	
10	Altus	
11	3D	
12	Ghetto Customs	
13	Team Brazil	

Row 4	STAGING IN TOWER PADDOCK	DOWN ENTRY RAMP 1
1	Superbike Supply	
2	Karns	
3	SpeedDemon	
4	Vestment	
5	Monk Moto	
6	Horney racing	
7	Tab Performance	
8	Whey Racing	
9	Brown Town	
10	Ikonic	
11	Robem	
12	BGB Racing	
13	Seethaler	
14	Bettencourt	
15	TEAM JBR	
16	Limitless	
17	Galluser	
18	Red Lobo	
19	Hoban brothers	
20	Shane Maggs	
21	Privateer	
22	M13	
23	Kings Kamp	
24	Cycle pros	
25	Team Velocity	
26	Metronome	
27	2 Bones	
28	Ice Barn	
29	Ready to Ride	
30	Rikard Racing	
31	Reece Frankenfield	
32	Delta Capital Pro	
33	M3 Tabacco	
34	Donut Racing	
35	SDR298	
36	DCR Motion PRo	
37	Durbin Motorsports	

Pad 1		BLUE ROAD
1	<u>Escape Blow Dry</u>	
2	Caron Racing	
3	Ceparano Shoefelt	
4	AstroMAR	
5	TCB Racing	
6	LeJune	
7	Spanos Motors	
8	Werner Racing	
9	Corrientes	

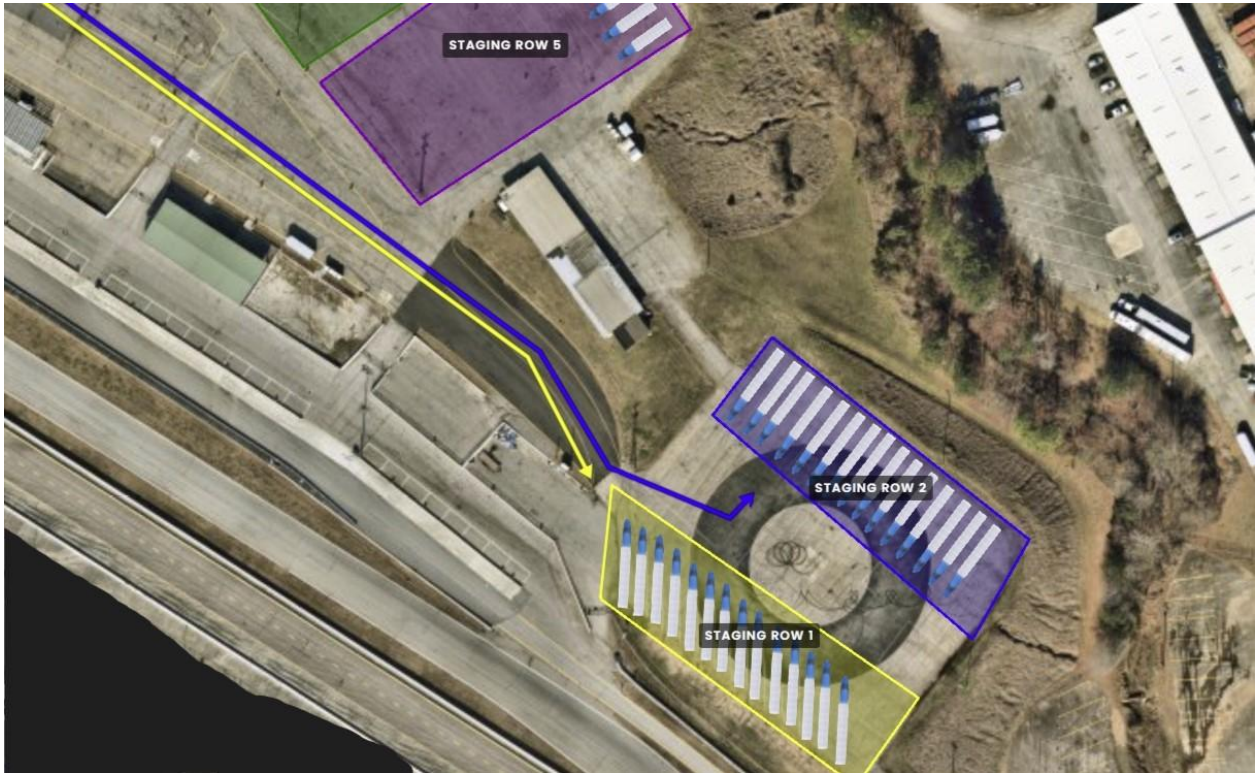
PAD 2 PARKING

PAD 2	STAGING ON SKID PAD	BLUE ROAD
1	<u>Monk Moto</u>	
2	40/30	
3	Team Yo	
4	JBJR	
5	Sawyer Lafayette	
6	Alpha Max	
7	MotoACE	
8	TB Motorsports	
9		
10		

STAGING INSTRUCTIONS

You are allowed to come in and stage anytime on Wednesday.

Staging for **Row 1** & **Row 2** on SKID PAD
(PARK AS PICTURED)



Staging for **Row 3** **Row 4** **Row 5** in Tower Paddock Area



Staging for PADS 1 & 2 in **ORANGE** Staging Lot in front.
(PARK AS PICTURED)



Load in will start at 9am

ROW 1 will be called first. You will cross over the bridge and turn left on Yellow Ramp 3, followed by **ROW 3** you will come down the same YELLOW RAMP 3.



**After that we will call ROW 2. You will cross over the bridge and turn left on Red Ramp 1.
Next up, we will call Row 4 followed by Row 5 to come down Red Ramp 1.**



Pad Parking on Top

***TEAMS IN PICTURE ARE NOT TEAMS ASSIGNED**



RV ASSIGNMENTS SHELF PARKING ON PADDOCK SIDE

Space #	Name
1	N.LEWIS
2	H.GILIM
3	M.MERICLE
4	KYLE WYMAN
5	KIM WYMAN
6	CARL PRICE
7	JESSICA STRACK
8	TROY HERFOSS
9	TYLER SCOTT
10	TIM IVANOFF
11	SEAN D. KELLY
12	KEVIN HORNEY
13	DKIP DOWLING
14	CHUCK GIACCHETTO
15	BARRY GILSENAN
16	GARY COWAN
17	NATHEN BETTENCOURT

RV SPACES 17 is on a slope, leveling will be needed. If you Requested a Power Spot and are not on this list, you will need to purchase a non-powered space for \$100 and park in middle of Support Paddock. Any questions or requests, please contact:

Jason Wade
jwade@motoamerica.com